

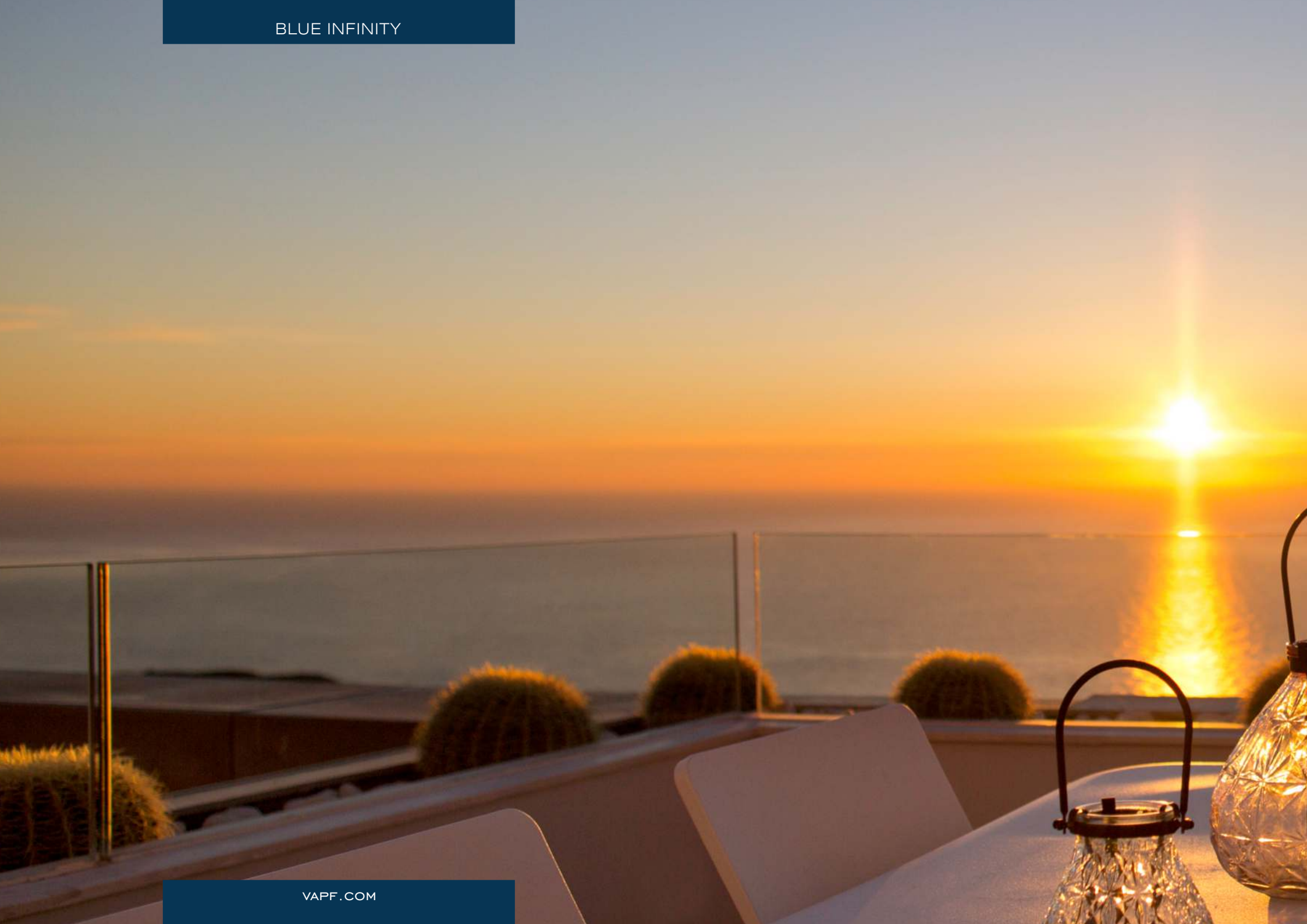


BLUE
INFINITY

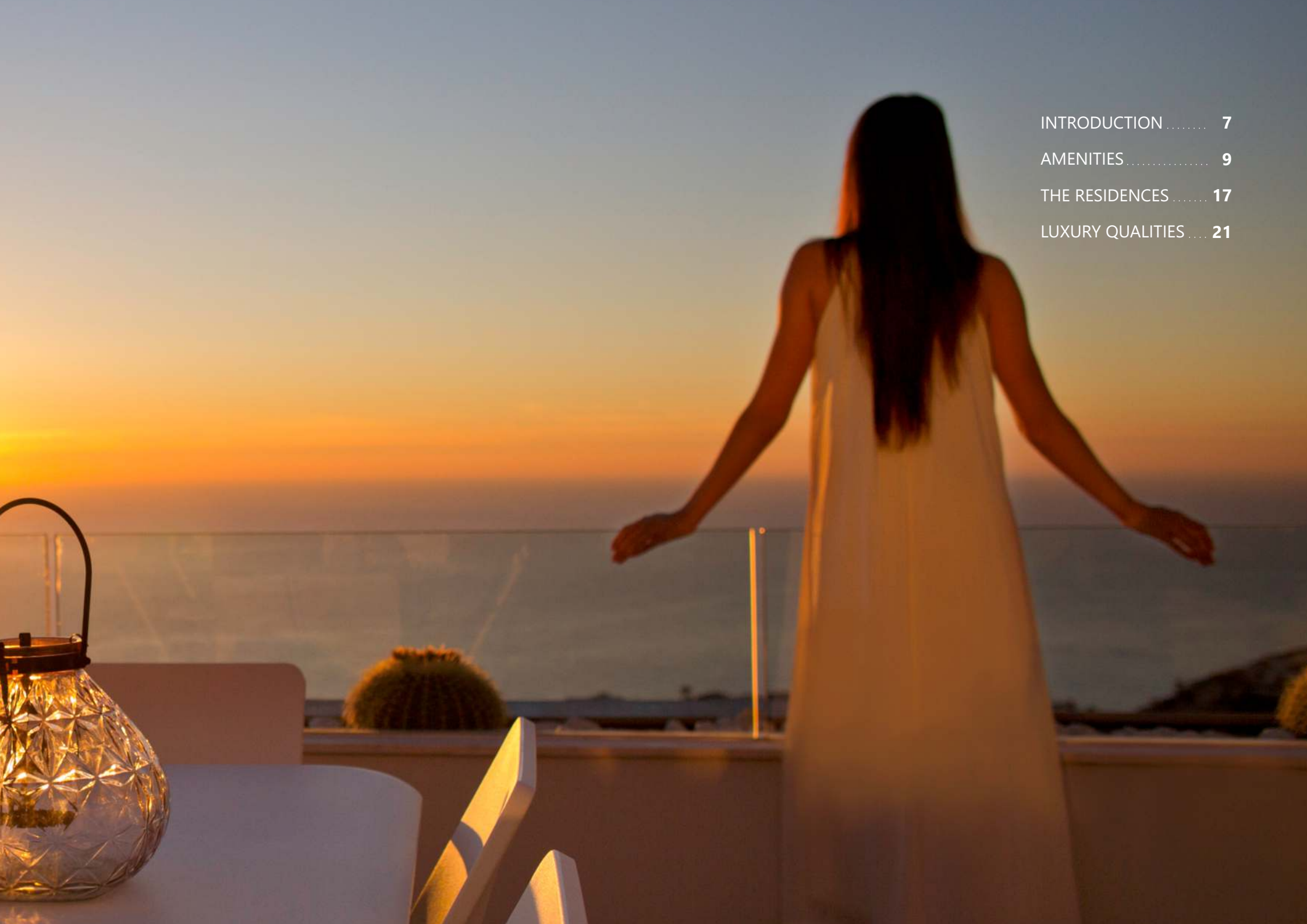
LUXURY RESIDENCES

LUXURY RESIDENCES
WITH ALL THE AMENITIES
ONE COULD WISH FOR AND
EXCLUSIVE SEA VIEWS

BLUE INFINITY



VAPF.COM



INTRODUCTION 7

AMENITIES 9

THE RESIDENCES 17

LUXURY QUALITIES 21

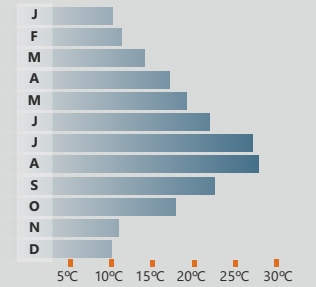


DISTANCES

- Paris** 1h 40
- London** 2h
- Dublin** 2h 20
- Brussels** 2h
- Berlin** 2h 30
- Oslo** 3h 15
- Stockholm** 3h 30
- Warsaw** 3h
- Moscow** 4h 20

TABLE SHOWING AVERAGE

TEMPERATURES IN THE COSTA BLANCA NORTH





GRUPO VAPF

Since 1963 creating homes

The VAPF Group, is a family run Spanish business, founded in 1963 in the municipality of Benissa, Alicante.

A leading company in the promotion and construction sector on the North of the Costa Blanca, based on a firm commitment to work every day to meet the needs of its customers, with high standards of design and quality of construction. We offer a complete service that makes purchasing a home a good investment and a pleasant experience.

These same principles have allowed the VAPF Group to develop more than 14 urbanizations and 8,500 homes. Enjoy the confidence of buying with Grupo VAPF.

Our clients come first



Extranet
Clients



Multilingual
service



Free
insurance



Free
hotel



Custom
delivery



Supply
management



Rental
management



Keys
custody





Blue Infinity, a development that enjoys the spectacular sea views that the Residential Resort Cumbre del Sol is internationally renowned for a truly perfect place for those seeking to enjoy the Mediterranean climate and marvellous sunrises by the sea.

Blue Infinity is located at the Residential Resort Cumbre del Sol, in the coastal town of Poble Nou de Benitatxell, a few kilometres from Xàbia and Teulada-Moraira, in the north of the Costa Blanca, equidistant between Valencia and Alicante city.

A residential zone that is very highly regarded and sought after, ideal to live in all year round and to be able to enjoy the mild, sunny winters, a perfect place for those seeking privacy, tranquillity and to enjoy the impressive views over the Mediterranean Sea.

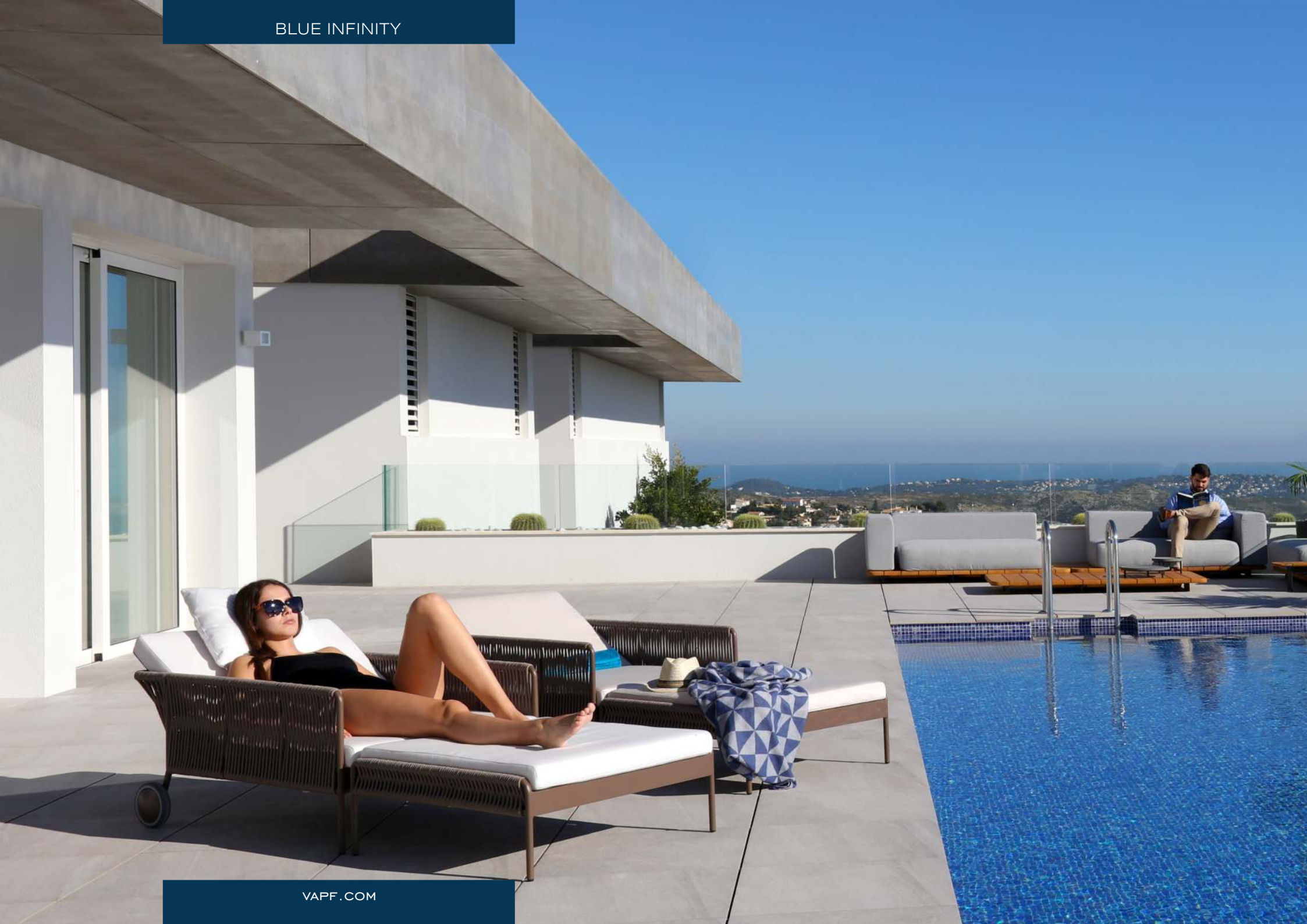
A Resort that blends the beauty of the Mediterranean Sea with the services needed to reside here all year long. With the international college, The Lady Elizabeth School, the Cañada del Sol Equestrian Centre, Restaurants, the Cumbre del Sol Sports Club, the Adelfas Shopping Centre, which has a supermarket, hairdresser and beauty centre, bar and restaurant, maintenance and hire company, pharmacy, medical centre, etc.

All in addition to its beautiful coves and beach, trekking routes and the unique environment offered by the Granadella Nature Reserve as the main attraction.

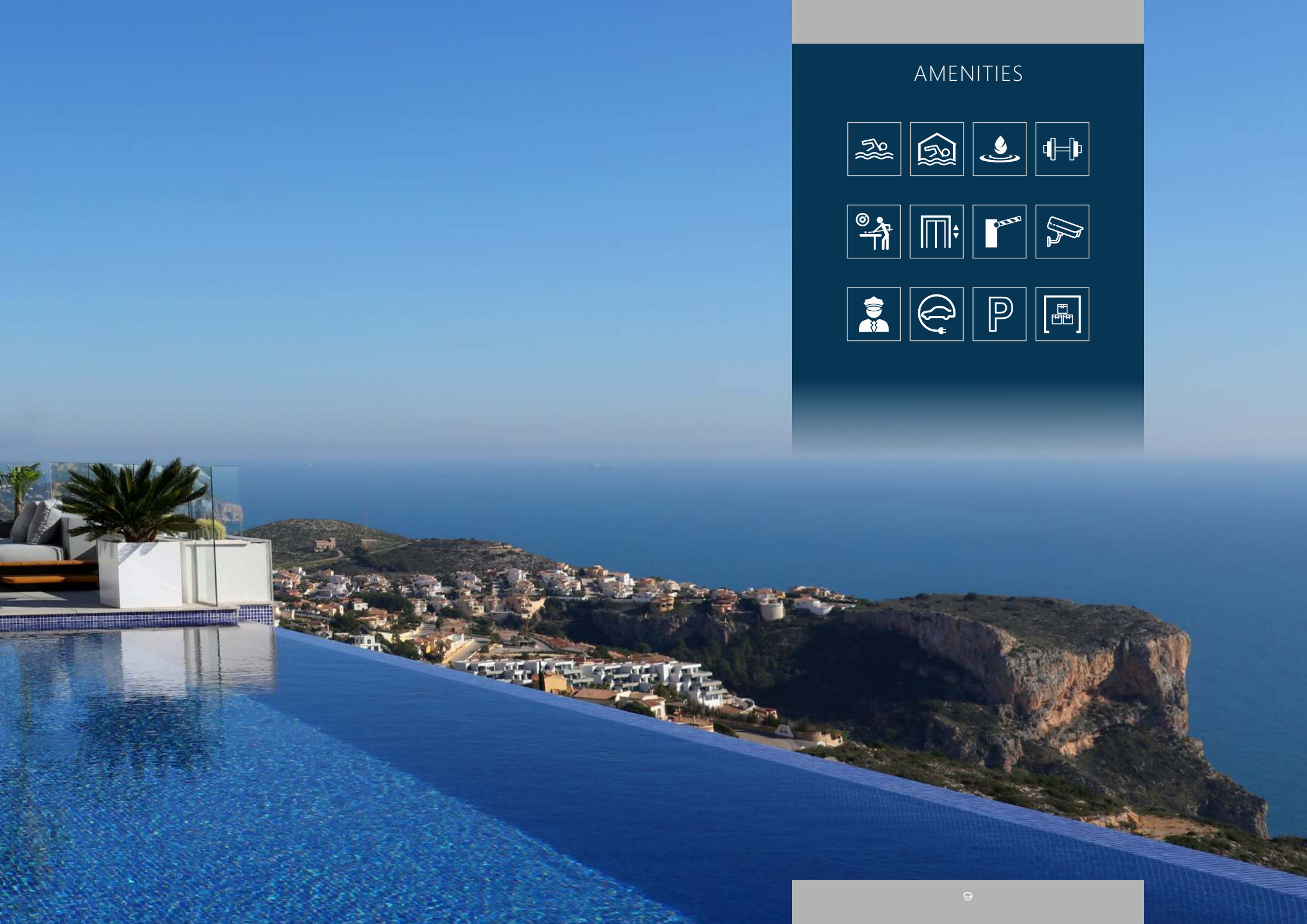
To all of these services and leisure alternatives, we can also add those offered by the neighbouring municipalities like Benitatxell, Jávea/Xàbia and Teulada-Moraira, with their wide range of restaurants, shopping centres, private clinics, sports activities, among others. Everything you might need very near your home.



BLUE INFINITY



VAPF.COM



AMENITIES







Blue Infinity luxury residences, with apartments designed so that the sea is always present, with large, open and luminous spaces, prioritising the owner's comfort, privacy and safety.

This promotion stands out for its avant-garde aesthetics, perceptible right from the moment you enter it. The hall, the central core that houses a large gallery that vertically runs through the entire building, is the main piece, a luminous entrance in which we find the stairs and the lifts that connect the different floors and from where we can already enjoy the marvellous panoramic views.

The façade combines decorative elements with calming details and others in white to achieve an elegant ensemble that blends with the surroundings.



Access to **Blue Infinity** is exclusively for the owners, with entrance control and concierge service, which provides extra safety and privacy. Several parking spaces are available for visitors, as well as green areas and community areas.

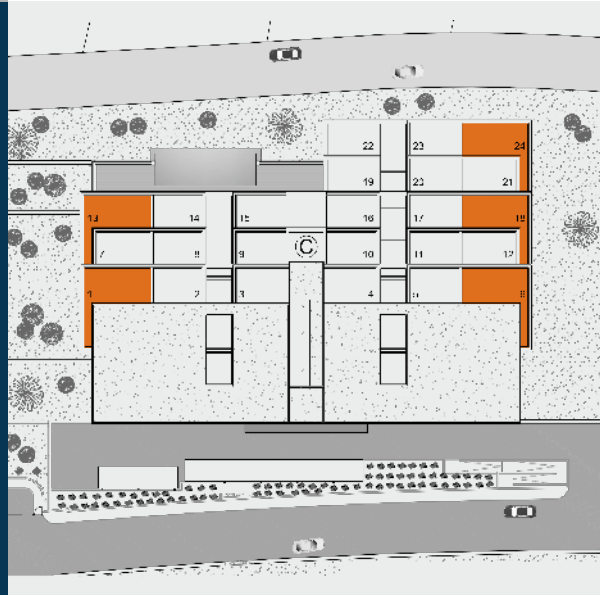
On the ground floors in each building are the communal areas located and these consist of various spaces reserved for leisure and relaxation. The outside area has a large, infinity pool with a solarium, where you can enjoy your sunbathing.

The indoor area has an equipped gym with changing-rooms and another, separate area, with wellness facilities as a heated pool with Jacuzzi, sauna, Turkish bath, several showers, relaxation area, garden patio,..., all of them with large bay-windows so that you can relax in front of the Mediterranean Sea.

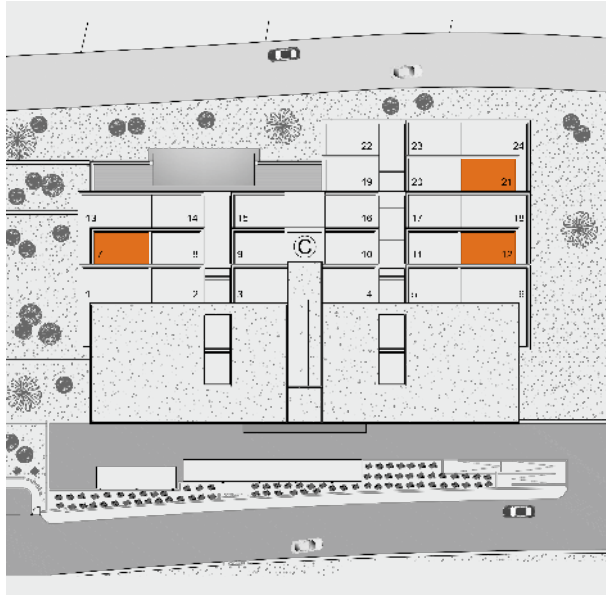
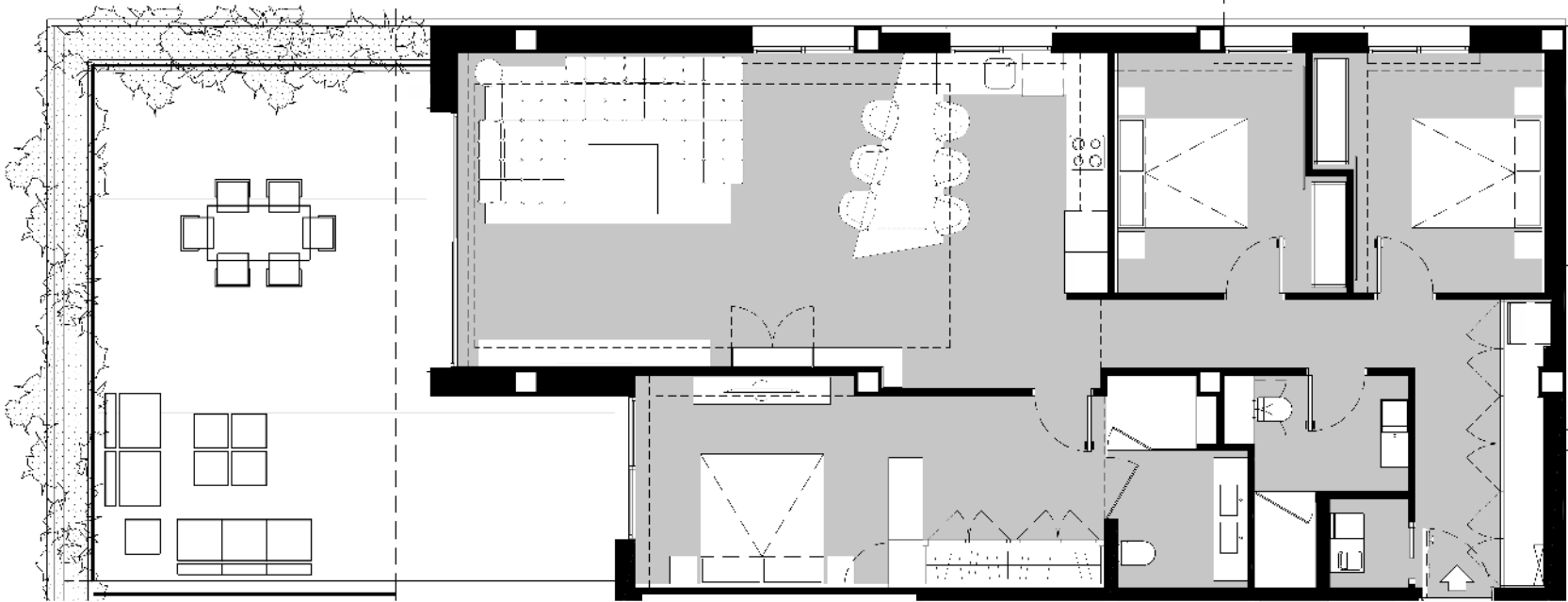


TYPE A+

 317 m ²	 130 m ²	 73 m ²	 3
 3			
			



The calculation of the square meters of the common area includes the parking place, storage room, installation room and the square meters corresponding to the common areas (outdoor terrace, outdoor swimming pool, sauna, jacuzzi, Turkish bath, indoor climate pool, social club, etc.).



TYPE A



292 m²



130 m²



53 m²



3



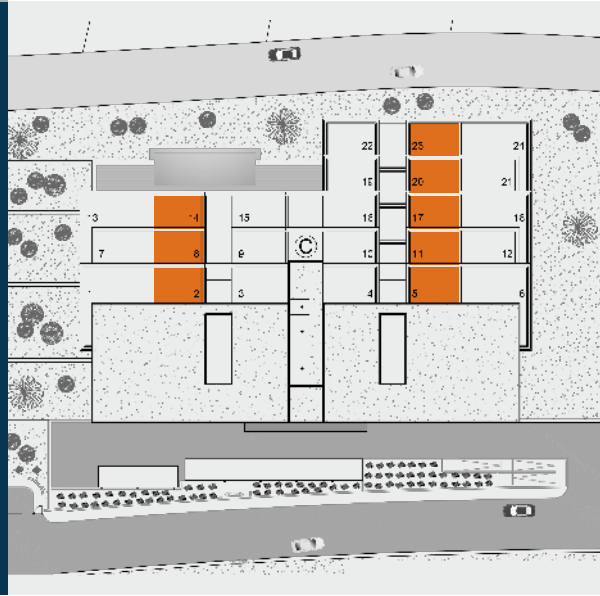
3



1:100 0 1 2 3 4 5m

TYPE B

 246 m ²	 106 m ²	 49 m ²	 2
 3			
			

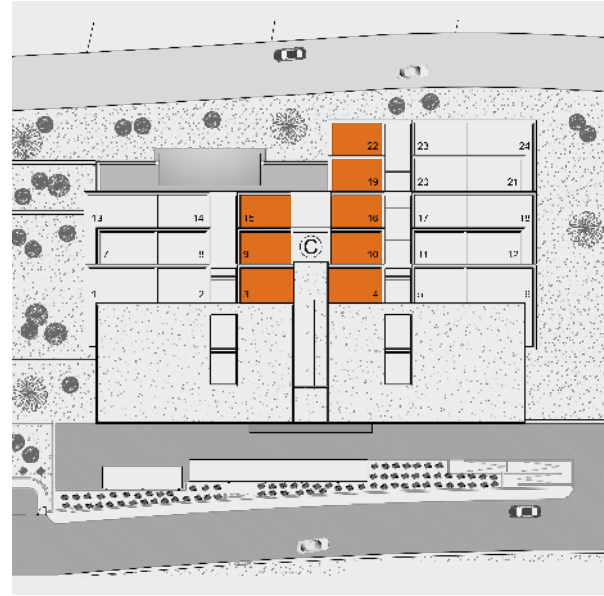


1:100 0 1 2 3 4 5m

The calculation of the square meters of the common area includes the parking place, installation room and the square meters corresponding to the common areas (outdoor terrace, outdoor swimming pool, sauna, jacuzzi, Turkish bath, indoor climate pool, social club, etc.).



1:100 0 1 2 3 4 5m



TYPE C



BLUE INFINITY



VAPF.COM

THE RESIDENCES







The **Blue Infinity** homes stand out for their dimensions, with surface areas of over 240m² and terraces from 40m², and the distribution is set out to enjoy the sea views, to have luminous rooms, details that achieve a modern and elegant design. This, along with the fixtures and fittings, the materials and technologies aimed at achieving apartments that are highly energy efficient, turn them into the ideal homes both to live in throughout the year and to enjoy during the holiday periods.

The homes have a modern style design, following the same lines as the building with the distribution directed towards the Mediterranean Sea horizon. The quality of the materials, finishes, the design and the decoration, have all been carefully chosen to guarantee project excellence and to create a unique and unrepeatable development on the North Costa Blanca.

At **Blue Infinity** you can choose between different apartment layouts with 3 bedrooms, with various terrace sizes, corner apartments, penthouses, street level, a wide range so that you can choose the one that best adapts to your needs and lifestyle.

Additionally, we would highlight the functionality of the spaces, providing them with storage areas, built-in wardrobes in all the bedrooms and in the hall, and the designs in both the living-dining room and the master bedroom with their direct access to the terrace. The distribution and dimensions of the master bedroom are outstanding with large, built-in wardrobes in the dressing area and the en suite bathroom with custom-designed furniture.

Each apartment also has a covered parking space with pre-installed charging point for electric cars and a storage room.





LUXURY QUALITIES AND
MAXIMUM ENERGY EFFICIENCY

Roca

DAIKIN

SIEMENS

SILESTONE
BY COSENTINO

hansgrohe
AXOR | PHARO

SONOS®

zehnder

GRANDSTREAM
ON SPEAKER PHONE

vitrogres

VESCOM

GLAMORA
CREATIVE WALLCOVERINGS

Apple iPad

smart:)things

ILLUXTRON

rocersa
CERAMICA

FRECAN

MOBOTIX

NIESSEN

BOSE

inalco

COSMIC

Pando

AIRZONE
La climatización inteligente

moos®





HOME FLOORING

Porcelain flooring and matching skirting from a choice of white plus or natural stone by the Inalco company or similar quality.

The master bedroom, a choice between bamboo flooring by Moso or natural stone flooring by Inalco or similar quality. Both with white skirting.

EXTERIOR PAVING

Anti-slip paving in a 30x120cm format, pearl grey by the Rocersa brand or similar quality.

BATHROOMS

Wall-hung toilet with soft-closing seat and cover by Roca or similar quality.

Bathroom fittings (taps etc), wall recessed with chrome finish by Hansgrohe or similar quality.

Large format, anti-slip shower tray with rain-effect ceiling shower by Hansgrohe or similar quality and front, tempered glass shower screen.

Bathroom 1: exclusive design bathroom washbasin with top made of metallic plate lacquered in black, two basins, lower cupboard with two drawers and two customised mirrors with rear LED lighting.

Bathroom 2: washbasin by Cosmic with mirror with double LED side lighting by Cosmic or similar. Fitted wardrobe with two doors.

Bathroom 3: wall-hung toilet and basin, W+W model with chrome finish fittings with basin water filtering system for use in the toilet by Roca, with matching rectangular mirror by Cosmic or similar quality.

TILING

Bathroom 1: white porcelain tiling plus bush hammering by Inalco or similar quality.

Bathroom 2: white porcelain tiling plus bush hammering by Inalco combined with glazed tiling by Vitrogres or similar quality.

Bathroom 3: glazed tiling by Vitrogres on the basin wall or similar quality.

Kitchen: choice of wall tiling between natural quartz slab by Silestone or porcelain stoneware slab with natural marble finish by Inalco or similar quality.

Living-dining room: choice of decorative tiling between porcelain stoneware slab with natural marble finish by Inalco or bamboo by Moso or similar quality.

Bedrooms: vinyl siding by Vescom or similar quality, combined with white panelling with LED lighting with diffuser. Two designs for master bedroom and other bedrooms.

Corridor: vinyl siding by Glamora or similar quality.

Walls and ceilings: white plastic paint.

KITCHEN

Fully fitted kitchen with matt white lacquered units with groove handles, stainless steel sink and taps by Frecan or similar quality. With two finish options, depending on the decoration project:

Option A: niches and integrated dining table in Eucalipto Fume wood by Finsa or similar quality, porcelain stoneware worktop with natural marble finish by Inalco or similar quality.

Option B: niches and integrated dining table in bamboo veneer by Moso or similar quality, natural quartz slab worktop by Silestone or similar quality.

Electrical appliances: fridge, induction hob, multi-function oven, microwave, dishwasher and washing machine with drying function by Siemens and extractor by Pando or similar quality.

AIR-CONDITIONING

Altherma System by Daikin with hot air/water pump INVERTER with high energy efficiency supplying heating, air conditioning, hot sanitary water with thermostat in every

room and connected to the home's automation system. Underfloor heating throughout the home.

Highly efficient ventilation system by Zehnder ComfoAir that provides fresh air throughout the home, recovering 95% of the heat, energy savings, comfort, hygiene and property conservation or similar quality.

DOMOTICS

Intelligent home automation system controlled by smartphone or tablet from the home or distance control, with controls over the living-dining room lights, motorised blinds and curtains, air conditioning and heating, alarm and video intercom.

INSTALLATIONS

Video intercom and interior video telephone.

Wireless alarm with Visonic or similar video verification.

Multi-room sound system by Sonos or similar, connected to Bose or similar speakers that are recessed into the ceiling.

Technical illumination that combines recessed LED luminaries, decorative strips, wall lamps and recessed floor lighting or similar quality.

CARPENTRY

Exterior carpentry in premium the range white, lacquered aluminium with thermal bridge breaking, double glazing, insulating glass and solar control, air chamber, laminated safety glass by Technal or similar.

Armoured entry gate with anti-pry anchoring, hinges and safety lock.

Floor-to ceiling doors in white matt color, crank on practicable doors and handle on sliding doors.

Wardrobes with sliding doors with hidden rail, interior with aluminium structure with hangers, shelves and drawers, interior LED lighting and cladding matching with the rest of the claddings in each bedroom.



BLUE
INFINITY
LUXURY RESIDENCES



VAPF

BUILDING HOMES SINCE 1963

La empresa se reserva el derecho de modificar sin previo aviso, la información contenida en este catálogo. Las imágenes del presente catálogo son meramente orientativas y no ostentan carácter contractual para la empresa. Tanto los planos definitivos, como los detalles de cada vivienda estarán sujetos al Clausulado del correspondiente contrato. Además estas imágenes corresponden a proyectos concretos, de forma que un cambio de ubicación a otras parcelas implicará modificaciones en las mismas. Prevalecerá la versión en castellano. La información contenida en este catálogo es válida a la fecha de impresión. The company reserves the right to modify, without previous warning the information contained in this catalogue. The pictures of this catalogue are only for guidance and have no contractual value for the company. The final plans and finishing details of each property will be subject to the clauses contained in the corresponding contract. In addition, these images correspond to specific projects, so that a change of location to other plots will implicate modifications. The Spanish version prevails. The information contained in this catalogue is valid on the date of issue.



✉ Avda. País Valencià, 22
03720 Benissa (Alicante) - Spain

☎ **0034 900 123 323**

@ vapf@vapf.com

🌐 www.vapf.com

📘 facebook.com/VAPFGroup

📷 instagram.com/vapf_group